

TESTED TO COMPLY WITH



MEETS
EN ISO:3059
Specifications



QUADRAN™ 365

Compliant NDT LED UV-A Inspection Lamp

QDR-365SC

▶ Nominal steady-state UV-A intensity of 3,700 $\mu\text{W}/\text{cm}^2$ at 15 in (38 cm)

▶ Low visible light emission—less than 0.5 foot-candle (5 lux)



Compliant



4 UV-A LEDs
1 White Light LED



Very Broad
Coverage Area



Cool
Running

LONG-LASTING UV-A LENSES

Reduce the rate
of solarization

RUBBER BUMPER

With Borofloat® glass lens protects
LEDs from damage

BUILT-IN FANS

Maintains optimum
light output

WHITE LIGHT LED

Use to locate surface flaws

Faceplate with INTEGRAL UV-A PASS FILTERS

Reduce visible wavelengths

EASY CONTROL

Rear-mounted, three-way rocker switch
(white light/off/UV)

IN-LINE INSPECTION

Lamp handle pin receptacle allows
for easy mounting attachments



CERTIFICATE OF
CONFORMANCE
included with each lamp



Your Complete Source for
Testing Equipment Since 1969!

www.BergEng.com
Berg Engineering & Sales Company, Inc.

1-847-577-3980
Info@BergEng.com

QUADRAN™ 365 QDR-365SC

- Fully compliant to ASTM E3022-18 standard for LED UV-A lamps
- Faceplate with integral UV-A pass filters reduce output of wavelengths longer than 400 nm
- White light LED allows for scanning of surface flaws or illuminating dark work spaces
- Rear-mounted, three-way rocker switch (white light/off/UV) for easy control of light sources
- Built-in fan keep LEDs cool to maintain optimum light output during extended use
- Choice of standard 8 foot (2.4 m) or extra-long 20 foot

- (6.1 m) heavy-duty power cord with AC plug and rubber boot. Also available: Optional industrial power supply or in-line power supply with cord sets (sold separately). All power supplies available in 120V, 230V, 240V and 100V models.
- Meets ASTM UV-A intensity and wavelength specifications for LPI and MPI
- UV-absorbing spectacles and padded carrying case included
- Lamp handle pin receptacle allows for easy attachment of various Spectroline® mounting accessories for in-line inspection applications (accessories sold separately)

MODEL	NOMINAL STEADY-STATE UV-A (365 nm) INTENSITY at 15 in (38 cm) ①	VISIBLE LIGHT MEASUREMENT	UV-A COVERAGE AREA at 15 in (38 cm) at minimum 1,200 μW/cm ²
QDR-365SC	3,700 μW/cm ²	< 0.5 foot-candle (5 lux)	6 in (15 cm) Diameter

Light Source: (4) UV-A LEDs, (1) white light LED
Lamp Style: Pistol grip
Lamp Head Size: 6 x 5.5 in (15 x 14 cm)
Length: 10 in (25 cm)
Weight: 3 lb (1.36 kg)

White Light LED Intensity:
 High setting: 300 foot-candles (3,229 lux)
 Low setting: 10 foot-candles (108 lux)

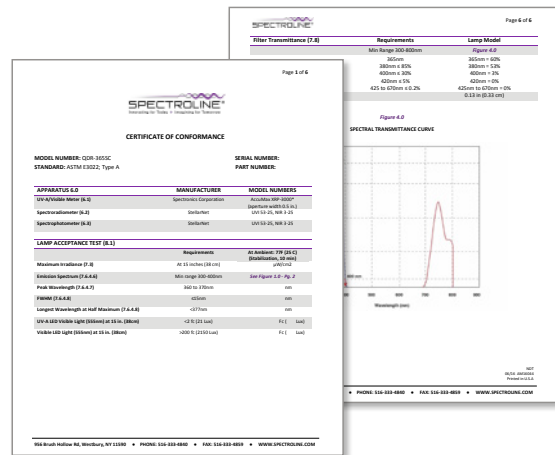
Power Requirements: 100-120VAC / 12VDC*

*Also available in 230V and 240V versions.

① UV-A intensity reading taken with the Spectroline® AccuMAX™ Series meter, and is factory set to the value shown.

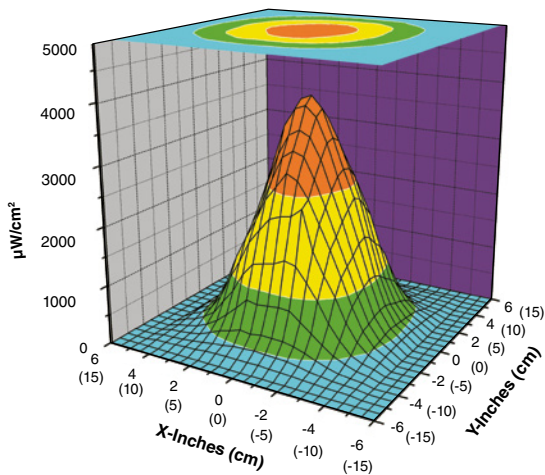


CERTIFICATE OF CONFORMANCE

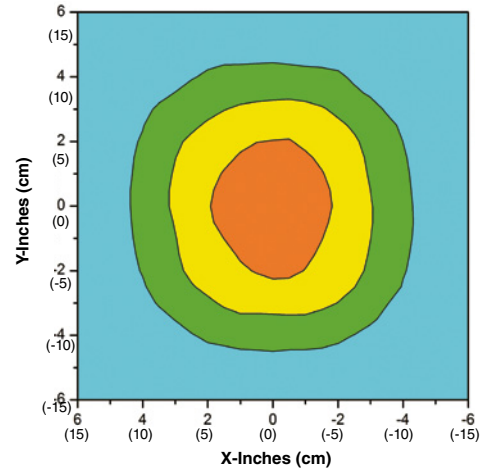


UV-A Beam Profiles

Surface Contour Profile at 15 in (38 cm)



Top Intensity Profile at 15 in (38 cm)



www.spectroline.com

956 Brush Hollow Rd, Westbury, NY 11590 USA
 800-874-8888 • 516-338-1818

DISTRIBUTED BY:

www.BergEng.com

Berg Engineering & Sales Company, Inc.

NDT

1-847-577-3980

Info@BergEng.com



Your Complete Source for
 Testing Equipment Since 1969!