



# GX ORION

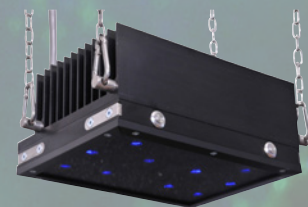
**MODULAR** OVERHEAD UV INSPECTION LIGHT

**PLC INTERFACE**  
**IP68 WATERPROOF**

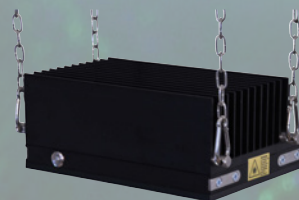


**OPTION 1:  
REMOTE  
CONTROLLED**

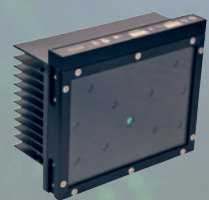
Allows you to switch on/off the UV and white light, change the intensity and set up the timer from a distance



**OPTION 2:  
UV AND WHITE LIGHT ONLY**



**OPTION 3:  
UV ONLY**



**GLASS SURFACE PROTECTS  
SENSITIVE COMPONENTS**

**GX Orion REMOTE**  
1500-7000  $\mu\text{W}/\text{cm}^2$

COMPLIES WITH  
ASTM E3022-2015  
Standard

**GX Orion UV & WH**  
 $\approx 7\,000\ \mu\text{W}/\text{cm}^2$

COMPLIES WITH  
ASTM E3022-2015  
Standard

**GX Orion UV**  
 $\approx 4\,500\ \mu\text{W}/\text{cm}^2$

COMPLIES WITH  
ASTM E3022-2015  
Standard

COMPLIES WITH  
Rolls-Royce RRES 90061  
Specification

COMPLIES WITH  
Airbus AITM6-1001  
Testing Method



**BERG ENGINEERING & SALES CO., INC.**  
*Your Complete Source for Testing Equipment Since 1969!*

3893 Industrial Avenue • Rolling Meadows, IL • 60008  
phone: (847) 577-3980 • fax: (847) 577-0474  
[www.bergeng.com](http://www.bergeng.com) • [info@bergeng.com](mailto:info@bergeng.com)

## GX SERIES – OVERHEAD LIGHT

### TESTED TO COMPLY WITH

	Initial UV Intensity* ( $\mu\text{w}/\text{cm}^2$ )	ASTM E3022-15 Standard	ROLLS-ROYCE RRES 90061 Specification	AIRBUS AITM6-1001 Testing Method
GX Orion <sup>REMOTE</sup>	1 500 – 7 000	✓		
GX Orion <sup>UV &amp; WH</sup>	≈ 7 000	✓		
GX Orion <sup>UV</sup>	≈ 4 500	✓	✓	✓

\* At a distance of 38cm (15 inches)

- **WATERPROOF:** GX Orion is the only overhead UV system on the market that is certified with an ingress protection marking of IP68 Waterproof, making it an extremely useful tool for inspection areas with excessive liquids.
- **PLC INTERFACE:** All GX Orion units come with a PLC interface that can be used to monitor the UV light from a computerized panel.
- **MODULAR DESIGN:** Allows you to design the desired covered area by mounting together multiple units.
- **THREE DIFFERENT OPTIONS:** Choose from remote controlled with multiple UV intensities, UV on/off button only, and UV and visible light on/off buttons only.

### THREE GX ORION <sup>REMOTE</sup> MOUNTED TOGETHER – SHORT SIDE TO SHORT SIDE



### THREE GX ORION <sup>REMOTE</sup> MOUNTED TOGETHER – LONG SIDE TO LONG SIDE



### THREE GX ORION <sup>UV</sup> MOUNTED TOGETHER – SHORT SIDE TO SHORT SIDE



### THREE GX ORION <sup>UV & WH</sup> MOUNTED TOGETHER – SHORT SIDE TO SHORT SIDE



### OPERATE VIA A FOOT PEDAL OR A POWER BUTTON



Can be used as an on/off switch for the UV light to activate the last used intensity and the last recorded timer setting.

