

Menu Directed Inspection

Remote Visual Inspection

Guided Inspection Software



Menu Directed Inspection (MDI) from GE Sensing & Inspection Technologies is the first software tool to standardize the inspection process in the NDT industry. An XLG3™ or XL Go™

VideoProbe® system operating MDI software helps guide inspectors through the inspection process and intelligently auto-generates a report—saving time, improving quality and increasing productivity.

Benefits

- Decrease reporting time upto 70%
- Increase speed and ease of sharing data
- Reduce errors with guided inspections
- Eliminate post inspection reporting with “click-to-report”
- Export data compatible with GE Sensing & Inspection Technologies’ Rhythm® software—a powerful NDT data management platform



The Value of MDI

There is hidden cost to create reports. For example, a typical report can take four hours to insert and format images. Through MDI, significant cost is eliminated.

	Manual	MDI
Cost Per Report	4 hrs x \$120/hr = \$480	0.5 hrs x \$120/hr = \$60
Reports Per Year	65	65
Annual Total Cost	\$31,200	\$3,900
Savings Per Inspector = \$27.3K		



Features

Standardized Inspection List

- Inspectors select from standard list to describe images
- Support engineers and asset owners receive reports with standard descriptions

Consistent Reporting

- Provides on-site inspection report in Word® format
- Automatically generates report with images and context
- Eliminates after-the-fact reporting
- Controls look, feel, and descriptions for specific inspections

Data Management

- Centralized, accessible asset health intelligence
- “Tagged” data available for archiving, trending, searching, and analysis
- Eliminates manual consolidation of images and handwritten inspection data

Remote Expert

- Saves time and money by getting information to inspection experts
- Quickly retrieves archived information using search criteria
- Easily shares large amounts of visual images

DICONDE

(Digital Imaging and Communications for NDT)

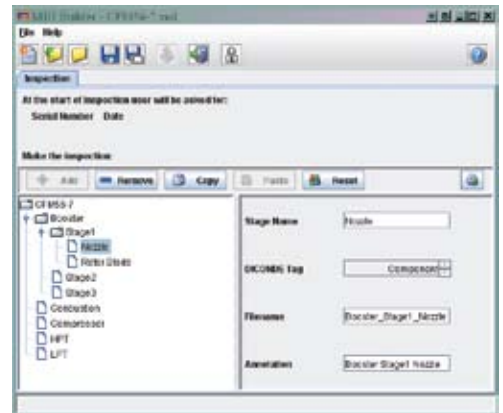
- MDI output is compatible with Rhythm® Acquire
- ASTM DICONDE industry standard format (non-proprietary) for maximum capability and flexibility for customers

Additional Software* for Enhanced Productivity



- **Rhythm Acquire** - Creates and uses inspection lists and automatically generates reports from multiple image sources
- **Rhythm Review** - Accepts data from Acquire or other Review Workstations. Provides tools for analysis, reporting, and data storage.
- **Rhythm Archive** - Delivers complete scalable DICONDE storage solutions

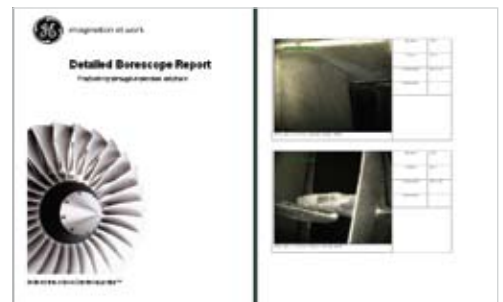
* sold separately



Sample screen of inspection list to be entered with simple program on a PC, XLG3™ or XL Go™ system. Defines annotation and data tags.



Sample inspection list selection screen



Automatically generated report. File names and descriptions of image source are known.

GEIT-65032EN (11/08)

© 2008 General Electric Company. All Rights Reserved. Specifications subject to change without notice. VideoProbe and Rhythm are registered trademarks of General Electric Company. XLG3 and XL Go are trademarks of General Electric Company. Word is a registered trademark of Microsoft Corporation. Patents Pending.



Your Complete Source for
Testing Equipment Since 1969!

www.BergEng.com
Berg Engineering & Sales Company, Inc.

1-847-577-3980
Info@BergEng.com