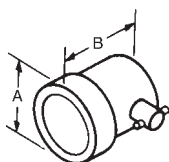


Contact Transducers

Single Element Contact Transducers are longitudinal wave transducers designed for general purpose manual ultrasonic inspection where test materials are relatively flat and smooth. Contact transducers provide high sensitivity for better penetration and are ruggedly constructed for extended service life under the roughest testing conditions.

RHP and XLC Style Contacts

Standard Contact Transducers are designed for abusive “scrubbing” applications. Gamma series are for applications where sensitivity and penetration are essential. Alpha series have maximum bandwidth for axial resolution. RHP style probes feature ceramic wearplates for the best combination of acoustic matching and durability and stainless steel housings to resist corrosion. New XLC (Extended Life Contact) style probes have special, high durability wearplates for the most abusive applications. Both styles feature an improved comfort grip and color band for frequency identification. CR models have right angle mounted BNC connectors and the CS models have top-mounted BNC connectors.



Element Diameter	A	B
.500	1.15	1.50
.750	1.40	1.50
1.000	1.65	1.50

Standard Contact Transducers— RHP and XLC Styles

Freq. (MHz)	Size (in.)	PRODUCT CODES			Accessories	Freq. (MHz)	Size (in.)	PRODUCT CODES				
		Style	Alpha Series	Gamma Series				Style	Alpha Series	Gamma Series	Accessories	
.5	.750	RHP RHP		250-043-CR 250-123-CS	Cables 6' BNC C-016 6' LEMO C-018	3.5	.500	RHP RHP XLC XLC		243-043-CR 243-123-CS 243-050-CR 243-150-CS	Cables 6' BNC C-016 6' LEMO C-018	
	1.00	RHP RHP		260-043-CR 260-123-CS			.750	RHP RHP XLC XLC		253-043-CR 253-123-CS 253-050-CR 253-150-CS		
1.0	.500	RHP RHP		241-043-CR 241-123-CS			1.00	RHP RHP XLC XLC		263-043-CR 263-123-CS 263-050-CR 263-150-CS		
	.750	RHP RHP		251-043-CR 251-123-CS			5.0	.500	RHP RHP	144-043-CR 144-123-CS		244-043-CR 244-123-CS
	1.00	RHP RHP XLC XLC		261-043-CR 261-123-CS 261-050-CR 261-150-CS				.750	RHP RHP	154-043-CR 154-123-CS		254-043-CR 254-123-CS
2.25	.500	RHP RHP XLC XLC	142-043-CR 142-123-CS	242-043-CR 242-123-CS 242-050-CR 242-150-CS				1.00	RHP RHP	164-043-CR 164-123-CS		264-043-CR 264-123-CS
	.750	RHP RHP XLC XLC	152-043-CR 152-123-CS	252-043-CR 252-123-CS 252-050-CR 252-150-CS		10.0	.500	RHP RHP		246-043-CR 246-123-CS		
	1.00	RHP RHP XLC XLC	162-043-CR 162-123-CS	262-043-CR 262-123-CS 262-050-CR 262-150-CS								

