

Dual Element Transducers

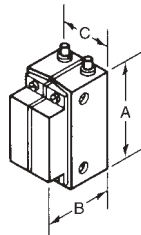
Dual Element Contact Transducers are longitudinal wave transducers with a split element; one half functions as a transmitter while the other functions as a receiver. Each half-element is angled slightly toward the other forming the “roof” angle. This “roof” angle effectively focuses the sound beam. These transducers are excellent for thin range flaw detection and thickness gauging. Because they have a discrete transmitter and receiver, better signal to noise ratios are achieved compared to single element transducers.



DU Style Dual Element

DU Dual Element Transducers with replaceable delays are excellent general-purpose probes for applications with flat or curved surfaces. High Temperature delays are also available for inspections at temperatures up to 400 °F. All DU transducers have standard Microdot connectors for easy replacement.

Element Size	A	B	C
.500 x .500	.75	.85	.78
.500 x 1.00	1.38	.92	.78



Standard Dual Element Transducers— DU Style

Freq. (MHz)	Size (in.)	PRODUCT CODES			
		Gamma Series	Delay Set	HT Delay Set*	Accessories
1.0	.5 x .5	291-750	DS-620	DS-720	Cable 6' BNC C-024 Couplant XD-740
	.5 x 1	291-740	DS-640	DS-740	
2.25	.5 x .5	292-750	DS-620	DS-720	
	.5 x 1	292-740	DS-640	DS-740	
5.0	.5 x .5	294-750	DS-620	DS-720	
	.5 x 1	294-740	DS-660	DS-760	

* Duty Cycle: at 400 °F, maximum contact time is 10 seconds; cool to ambient before reuse.

DU-F Style Dual Element, Benchmark Series

Benchmark series DU-F Style Dual Element Transducers feature proprietary BENCHMARK COMPOSITE® active elements. Benchmark series offer a superior combination of sensitivity, resolution, and penetration for punching through highly attenuative materials. They are especially beneficial when signal to noise ratio is a problem, for example coarse grain materials and fiber reinforced composites. Close tolerance, integral delays assure consistent performance.

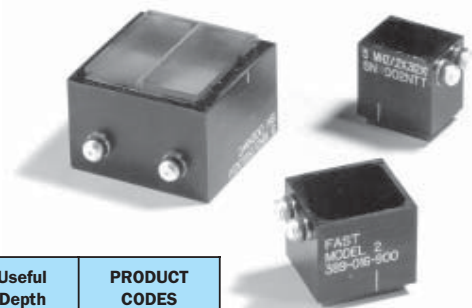


DU-F Style— Benchmark

Freq. (MHz)	Size (in.)	PRODUCT CODES	
		Benchmark Series	Accessories
2.25	.5 x .5	292-751	Cable 6' BNC C-024
	.5 x 1	292-741	
5.0	.5 x .5	294-751	
	.5 x 1	294-741	

FAST™ Probes for Rapid Manual Weld Inspection

Benchmark series FAST™ Probes are dual, high angle, longitudinal wave probes with proprietary BENCHMARK COMPOSITE® elements. They are primarily for inspection using the FAST™ method developed by SPIN (LLC). FAST™ high speed, manual weld scanning can reduce inspection costs for fabrication shops, field welding organizations, or any industry that performs in-service NDE of components. For a detailed Product Bulletin, contact our sales department.



FAST™ Probes

Model	Freq. (MHz)	Useful Depth	PRODUCT CODES
FAST1	5.0	0" to 0.6"	389-016-880
FAST2	5.0	0" to 1.5"	389-016-900
FAST3	5.0	0.5" to 4"	389-016-780

