



Krautkrämer CL Go+

Ultrasonic Precision Thickness Gauge

- Unrivalled precision, stability and repeatability
- Ergonomic design: Lightweight, bright and large display
- Effortless inspections with intuitive navigation
- 3-in-1 device: Easily upgradable to a flaw detector, corrosion or precision gauge

Inspection starts here.

Micro-meter precision in a rugged package

With a measurement precision of 0.001 mm (0.0001"), Krautkrämer CL Go+ ensures maximum accuracy, allowing measurements for common applications with ease. The CL Go+ precision thickness gauge is a versatile tool in a compact and

rugged package. With its intuitive menus and easy-to-use switch pad control, users can focus to make best use of its various features. CL Go+ also boasts powerful data management capabilities, allowing users to store and analyze inspection data with ease.

Next-Level User Experience

Designed with the user in mind, the Krautkrämer CL Go+ features a bright, large color display for maximum readability. Its lightweight and ambidextrous design enables single-hand

operation, making it an ergonomic solution for long hours of inspection work. This user-friendly design extends to its software interface as well. The intuitive navigation with five-way switch pad and quick function keys makes it easy to navigate through various modes and features.

It also supports a large assortment of Krautkrämer precision probes, providing versatility in various inspection scenarios.

Empowering You with Clarity

CL Go+ can record a large amount of data and organize it in multiple ways. It allows for quick and easy storage of thickness values in file form. This feature is fully user-programmable, capable of storing up to 100,000 measured values per file with attachments. The device can store multiple files simultaneously on an SD card, with up to 16 GB of space available.

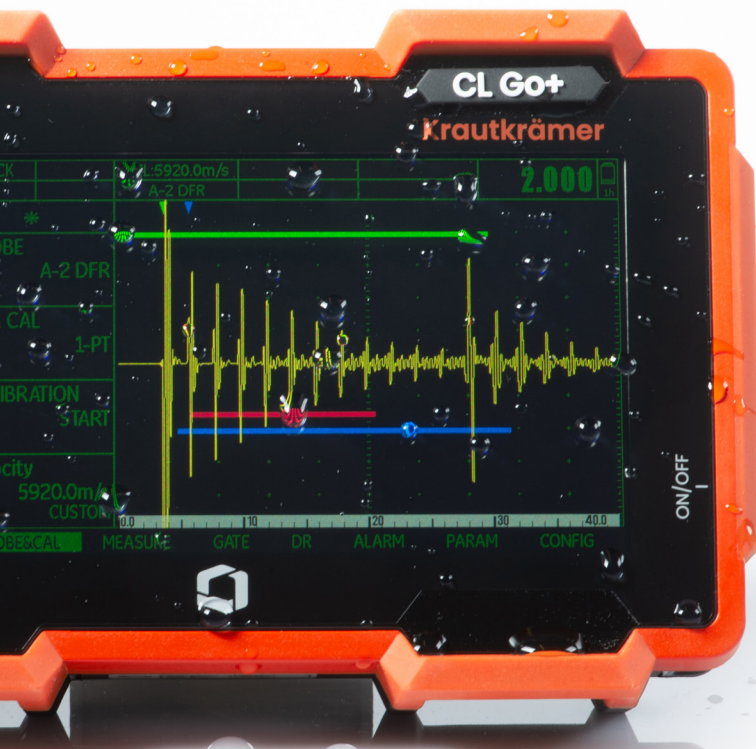
Bridging Expertise Gaps

The CL Go+ bridges expertise gaps with its dual-mode functionality, featuring Inspector mode for novices and Expert mode for more seasoned professionals. This ensures effective use across all skill levels, making it a versatile tool for any team.

Inspector mode simplifies the measurement process into just three steps – pick a probe, calibrate, and you're ready to measure. This makes it easy for even novice users to take accurate measurements.

Expert mode offers powerful, customizable setups for the most demanding applications. This allows seasoned professionals to fully utilize the capabilities of the CL Go+, tailoring it to their specific needs.

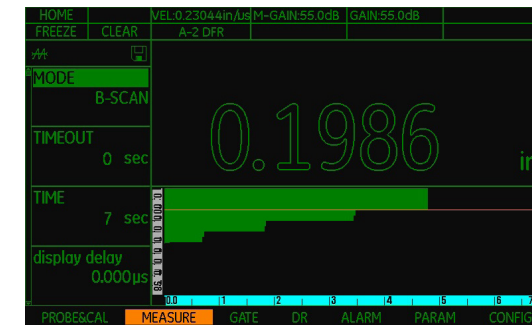
- 5" crisp & clear display for excellent indoor and outdoor visibility
- Large readouts eliminate eye strain
- Excellent screen-to-body ratio
- Lightweight and single hand operation
- Ambidextrous design enables left or right hand operation
- Integrated zero Block for quick calibrations
- Anti-slip stand
- Robust to be used in a variety of challenging environments
- IP 67 Rated & MIL 510 tested



Krautkrämer CL Go+ offers a full range of functionality in an easy to use, compact and rugged package.

Confidence in Each Measurement

In quality control, the accuracy of each measurement is important. The CL Go+ offers a premium level of precision, stability, and repeatability in every measurement.



Profile B-Scan



Quality Mode



Differential value display



Min-Max mode

The device uses advanced digital signal processing techniques and automatic gain control to provide stable readings under various conditions. The high-resolution A-Scan and gates allow for the optimization of measurement results to ensure accuracy. Key features include:

- Finite impulse response up-sampling combined with interpolated zero-cross measurement technique for improved measurement stability and reliability
- Automatic gain control for better repeatability

- Various calibration and zeroing modes for consistent accuracy
- Multiple measurement modes, including thickness, A-scan, B-scan, Min/max, Differential, Quality and Velocity

The CL Go+ Velocity option provides a mode for determining the velocity of a material with a known thickness. Users can input material thickness, place the probe on the part, and the CL Go+ will display the material's velocity. Each value can be stored in the data recorder and downloaded to a PC.

Suited for Your Needs

Serving as a user-friendly solution, the precision thickness gauge is particularly suitable for components utilized in the automotive, aviation, and aerospace industries. It efficiently measures cast and stamped metal components made from materials such as aluminum, steel, copper, and bronze. Additionally, it is effective for machined workpieces, tubes, chemically milled components, metal strips, metal plates, plastics and composites, and even glass.

The compact design makes it an ideal solution for diverse applications in the automotive, aviation, and aerospace industries.



A 3-in-1 platform

CL Go+ is part of a family of Krautkrämer inspection devices which includes the DMS Go+ for corrosion thickness inspections as well as the USM Go+ for conventional flaw detection.

As a customer of CL Go+ you have the flexibility to upgrade your device and use it as a corrosion thickness gauge, a flaw detector or both, effectively

turning it into a versatile 3-in-1 platform. In addition to being a very convenient solution to your inspection needs, you can also enjoy a lower cost of ownership by choosing these options.

Similarly, USM Go+ and DMS Go+ users can also add CL Go+ to their existing devices more cost efficiently than buying a separate precision thickness gauge.

Models and software options

| | | |
|----------|-----------------------------------|--|
| 179M5147 | CL Go+ | Standard ultrasonic precision thickness gauge with live A-scan |
| 179M5148 | CL Go+ DL | Advanced ultrasonic precision thickness gauge with live A-Scan & Data logger |
| 179M5149 | Software upgrade: CL Go+ | CL Go+ Software upgrade to USM Go+/DMS Go+ |
| 179M5150 | Software upgrade: CL Go+ DL | CL Go+ DL Software upgrade to USM Go+/DMS Go+ |
| 179M5151 | Software add-on: Data logger (DL) | Add Data logger (DL) to CL Go+ |

Feature list

| | 179M5147 | 179M5148 |
|---------------------------|----------|----------|
| A-Scan | Y | Y |
| Velocity measurement mode | Y | Y |
| Material velocity table | Y | Y |
| Quality mode | Y | Y |
| Differential mode | Y | Y |
| Timed B-Scan | Y | Y |
| Min-Max mode | Y | Y |
| Inspector / Expert mode | Y | Y |
| Data recorder | o | Y |
| USM Go+ upgrade | o | o |
| DMS Go+ upgrade | o | o |

More information on probes and accessories for CL Go+ can be found in the separate technical specifications leaflet

