

Fluke SmartView™ IR analysis and reporting software

Technical Data

For Fluke Thermal Imagers*

Fluke SmartView software is included with each Fluke Thermal Imager*. This powerful software is a modular suite of tools that annotates, views, edits and analyzes IR images. It also generates fully customizable and professional-looking reports in a few easy steps. Patent-pending IR-Fusion® Technology is fully supported. The software is easy to use for new users, yet delivers the performance specialized thermographers require for advanced analysis.

Image viewing and editing

- Displays an array of open images for convenient selection and analysis
- A simple mouse click displays the temperature at any given point
- Color palettes, reference images, markers and emissivity can be edited

Extensive annotation possibilities

- Add annotations to images in the camera or in the PC software
- Input information such as locations, category and other notes
- Reference images can be linked together for good/bad and before/after analysis
- Annotations can be included in reports

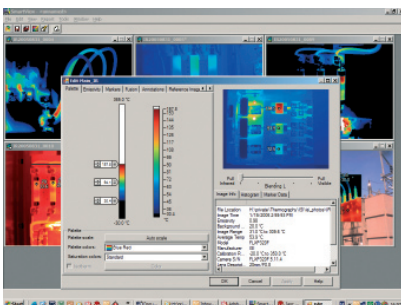
Detailed analysis and total image control

- Contrast and detail can be easily adjusted to display more effectively by altering the palettes and adjusting level span
- A complete set of marker tools are provided (Hot, Cold, Center Point, Center Box, etc.)
- Five viewing modes enable image optimization based on application needs

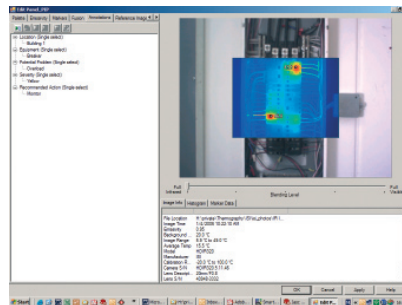


Fluke Ti25, Ti10, TiR1, and TiR Thermal Imagers

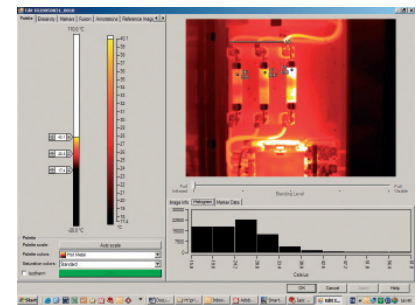
Fluke Ti4xFT and Ti5xFT FlexCam Thermal Imagers



Navigate, analyze and enhance IR images



Organize data with extensive annotations



Optimize images and quickly reveal issues

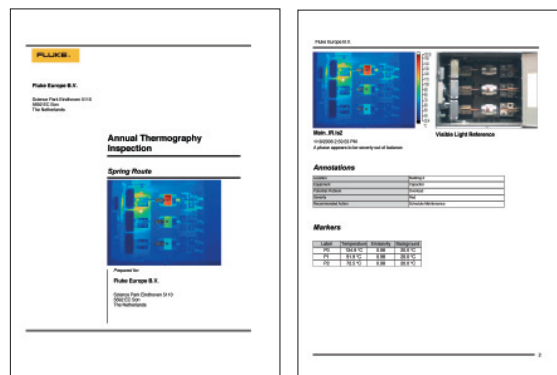
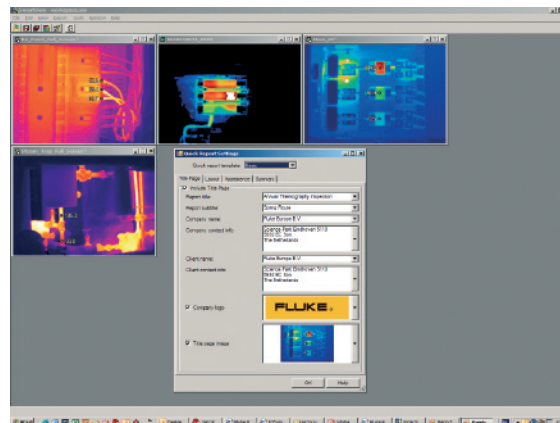
* SmartView software is included with all Fluke thermal imagers except the Ti20. The Fluke Ti20 comes with InsideIR software with free updates for the life of the product.

Simplified report generation

- Generate professional customized reports fast
- One-click report generation for a quick result
- Choice of features including before/after, IR plus visual (visible light), annotations, supporting data and graphics
- Report wizard guides the user through report generation

Other benefits

- Every member of your team can have access to SmartView software because Fluke provides it license free for unlimited use.
- Free software upgrades ensures optimum performance from your Fluke thermal imager, register the warranty on your imager to get email notification when upgrades are available.



System requirements

- Windows® 2000 SP4 with update rollup 1/XP SP2/ Vista
- A web browser for product registration. Internet Explorer 5.0 or newer or Netscape® 5.0 or newer
- 500 MB available disk space, not counting space requirements for web browser
- 16-bit color, 800 x 600 resolution video or better
- Color printer for printing reports and images
- CD-ROM drive (for installing SmartView software)

Fluke. Keeping your world up and running.®

Fluke Corporation
PO Box 9090, Everett, WA U.S.A. 98206

Fluke Europe B.V.
PO Box 1186, 5602 BD
Eindhoven, The Netherlands

For more information call:
In the U.S.A. (800) 443-5853 or
Fax (425) 446-5116
In Europe/M-East/Africa +31 (0) 40 2675 200 or
Fax +31 (0) 40 2675 222
In Canada (800)-36-FLUKE or
Fax (905) 890-6866
From other countries +1 (425) 446-5500 or
Fax +1 (425) 446-5116
Web access: <http://www.fluke.com>

©2007 Fluke Corporation. All rights reserved.
Specifications subject to change without notice.
Printed in U.S.A. 8/2007 2680044 D-EN-N Rev C