

# EXTECH<sup>®</sup> INSTRUMENTS Product DATASHEET

## 1000A 3-Phase Power & Harmonics

Power measurements and analysis of single and 3-phase/3-wire or 3-phase/4-wire systems

### Features:

- Large backlighting LCD displays up to 35 parameters in one screen (3P4W)
- Clamp-on True RMS power measurements with on-screen Harmonics display (1-99th order)
- Simultaneous display of Harmonics and Waveform
- Display of Waveform with Peak Values (1024 samples/period)
- Analysis of Total Harmonic Distortion (THD-F)
- Displays Active Power (kW), Apparent Power (kVA), Reactive Power (kVAR) and Power Factor
- kWh and kVARh energy measurements
- Maximum Demand (MDkW, MW, kVA, MVA) with programmable period
- Measures Current and Voltage
- Adjustable CT ratio (1 to 600) and VT ratio (1 to 3000)
- Graphic Phase diagram with 3-Phase system parameters
- 3-phase Voltage or Current Unbalanced Ratio (VUR, VIR) and Unbalanced Factor (d0%, d2%)
- Calculated Unbalanced Current through Neutral Line (In)
- Capture 28 Transient events (including Dip, Swell and Outage) with programmable threshold (%)
- Datalogger records up to 52,428 records in single phase, 2 wire applications (17,476 in 3-phase 4-wire applications)
- Optically isolated RS-232 interface with software to download Waveforms, Power Parameters and Harmonics
- CAT III-1000V, CE approved; 1yr warranty
- Optional 100A Current Clamp probes (382097) with 1.2" (30mm) jaw size or 3000A Flexible Current Clamp probes (382098)



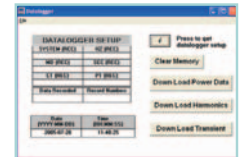
Optional 100A Current Clamp Probes (Model 382097) with 1.2" (30mm) jaw size



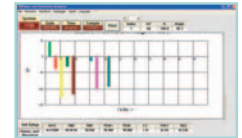
Optional 3000A Flexible Current Clamp Probes 24" long for wrapping around busbars (Model 382098)



Complete with (3) 1000A current clamps, 4 voltage leads with alligator clips, 8 AA batteries, AC adaptor, software, PC interface cable, and carrying case



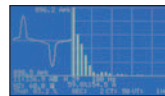
Software included to download, store data and display on a PC



Software Harmonics Phase Analysis



Software Harmonics Analysis



Harmonics Analysis



Phase Analysis



Power Analysis



Internal Menu

Specifications	Range	Basic Accuracy
ACV (True RMS)	600V	±0.5%rdg
ACA (True RMS)	1000A	±0.5%rdg
Active Power (kW)	9.999MW	±1%rdg
Apparent Power (kVA)	9999kVA	VA=Vrms x Arms
Reactive Power (kVAR)	9999kVAR	VAR= sqrt (VA <sup>2</sup> -W <sup>2</sup> )
Power Factor	0.0 to +1.00	±1.5%rdg
Frequency	45-65Hz	0.1Hz
Phase	-180.0°~ 0°~ +180.0°	±1°
Harmonics	1 to 99	±2%
Crest Factor	1.00 to 99.99	±5%
Peak AC Voltage accuracy	±(5%rdg+30d)	
Peak AC Current accuracy	±(5%rdg+30d)	
Active Power Energy (kWh)	0mWh to 999.999kWh	
Reactive Power Energy (kVARh)	0.0kVARh to 1000MWh	
Datalogging	52428 records (1P2W)/17476 records (3P4W)	
Warranty/CE	1 year/ CE approved	
Dimensions	Meter: 10.1 x 6.1 x 2.3" (257 x 155 x 57mm) Clamp: 2.2" (55mm), 2.5" x 1.0" (64x24mm) busbar	
Weight	Meter: 2.5 lbs (1160g); Clamp: 1.3 lbs (600g)	

### Ordering Information:

**382095** ..... 1000A 3-Phase Power & Harmonics Analyzer (110V)

**382096** ..... 1000A 3-Phase Power & Harmonics Analyzer (220V)

#### Accessories

**382000** ..... Voltage Test Leads with Alligator Clips (4 leads)

**382097** ..... 100A Current Clamp Probes (Set of 3)

**382098** ..... 3000A, Flexible Current Probes (Set of 3)

**EXTECH INSTRUMENTS CORPORATION**  
285 Bear Hill Road, Waltham, MA 02451-1064, U.S.A.  
Phone: 781-890-7440 • FAX 781-890-7864

ISO 9001:2000 CERTIFIED

**"Make mine an Extech!"™**  
[www.extech.com](http://www.extech.com)

Copyright © 2006 Extech Instruments Corporation. All rights reserved including the right of reproduction in whole or in part in any form.



06/29/06 - R4