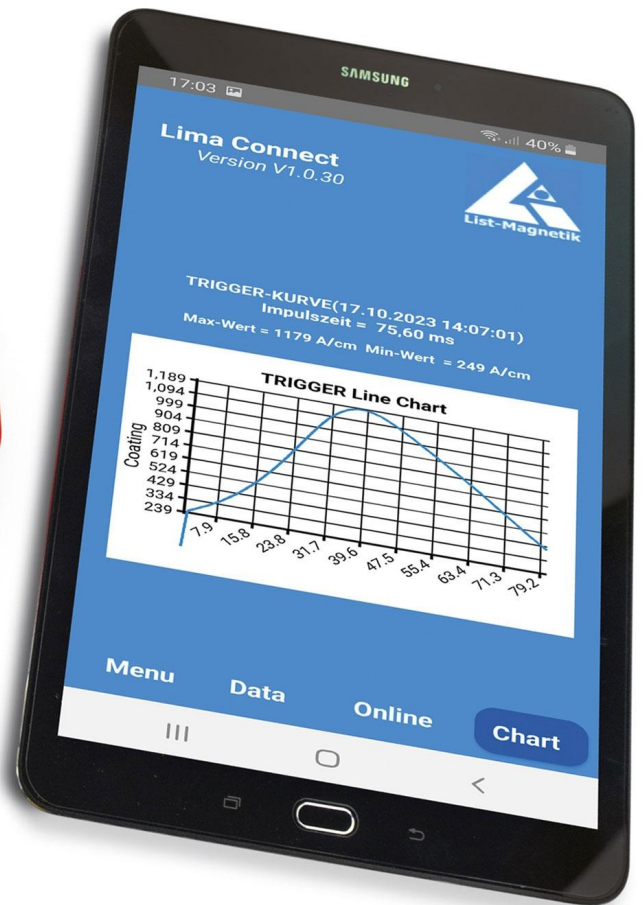


List-Magnetik Magnetic Field Meter Gaussmeter MP-4000



Experience a revolution in measurement technology with the MP-4000 professional magnetic field meter from List-Magnetik. This instrument uses external digital axial and transverse field probes to make precise measurements of DC and AC magnetic fields, as well as pulsed fields of all types. Applications range from geomagnetic fields to field strengths of 40,000 A/cm.

The MP-4000 gaussmeter is equipped with a high-resolution 320x480 pixel graphic LCD touch panel and a modern, intuitive user interface. A standout technical feature is the advanced probe electronics, which provide rapid digitization of measurements at a frequency of up to 200 kHz. This high-speed processing enables the device to capture and display magnetic field waveforms as brief as 0.1 milliseconds, giving users a highly detailed and accurate view of pulse behavior. Additionally, the meter can record and store alternating field waveforms at frequencies reaching 20 kHz, while ensuring peak values and pulse durations are reported with precision.

Achieving high precision and noise-free data is vital, particularly when dealing with exceptionally weak magnetic fields. To ensure this level of accuracy, the MP-4000 processes signals through electronics integrated directly within the probe, which digitize the Hall sensor output at the source.

When working with stable DC fields, the MP-4000 features a scan function that allows you to detect magnetic fields across broad areas, facilitating comprehensive statistical analysis. For pulse-based applications, the device generates high-quality graphical displays that provide a precise visual representation of the magnetic field pulse's behavior and progression.

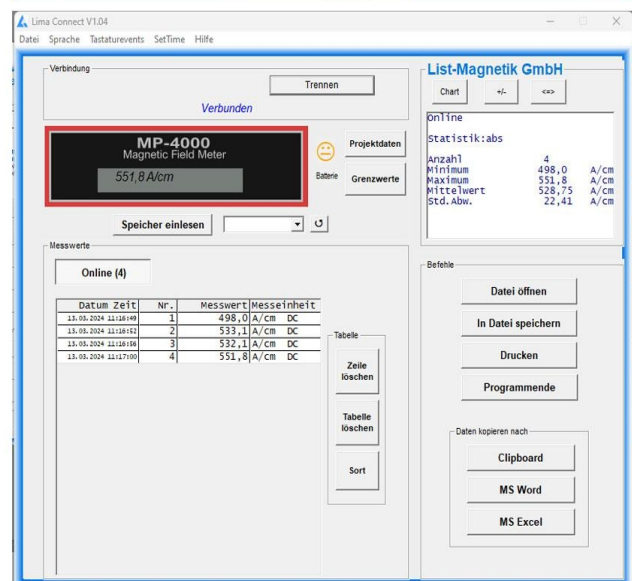
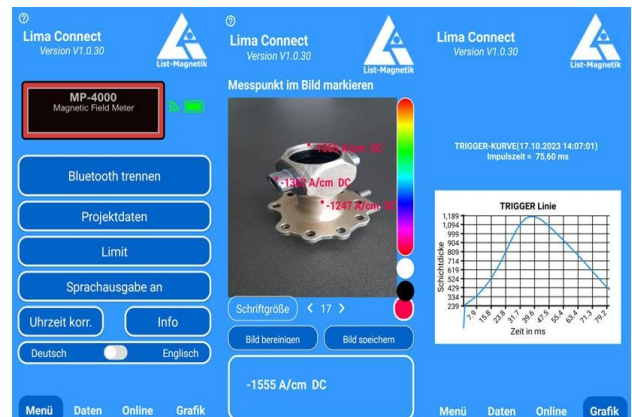
The MP-4000 is designed to accommodate a broad spectrum of magnetic field measurement tasks, featuring adaptable data storage, a hybrid digital-analog display, and integrated peak value measurement. For seamless connectivity, it includes a wireless interface to transfer data to Windows PCs and dedicated apps for Android and iOS. Additionally, the USB port provides a convenient option for maintaining a permanent connection to an external power supply.

This device includes an integrated SCPI interface, which enables the instrument to conduct remote measurements and provide real-time data while integrated into production line operations. This functionality is facilitated by a USB connection, which serves the dual purpose of data transmission and providing a continuous power supply for uninterrupted, long-term use.



Technical Data For Magnetic Field Meter

- Measuring units: A/cm - kA/m - Gauss / Oersted - Tesla switchable
- Applicable probes: Axial probe PM4-A, transversal probes PM4-T, PM4-TR, and PM4-TF
- Measuring range direct and alternating field / DC+AC: 0-40,000 A/cm
- Accuracy: in homogeneous field ± 1 A/cm to 50 A/cm, $\pm 2\%$ of measured value from 50 A/cm, $\pm 3\%$ of measured value from 20,000 A/cm
- Resolution: 0-1000 A/cm: 0.1 A/cm, >1000~A/cm: 1 A/cm
- Frequency range AC: 2 Hz - 20 kHz
- Peak value memory: at pulse time ≥ 0.1 msec
- Display: LCD touch panel color 320x480 pixel
- Multilingual menu navigation: German, English, Italian, French, Spanish
- Data logger: 10,000 measurements, flexibly divisible
- Statistics: Count/Maximum / Minimum / Average / Standard deviation
- Interface: wireless interface for communication with Android, iOS and Windows
- App for Android, iOS, Windows: free of charge via Google Play Store, Apple App Store, List-Magnetik website
- External control: via USB and SCPI communication interface
- Power supply: 3x 1.5 V AA Mignon. External power supply can be connected via USB
- Operating time: approx. 25 hours with battery, unlimited with external power supply
- Dimensions: 150 x 85 x 35 mm, Weight: 320 g with batteries



Technical Data Measuring Probes For Magnetic Field Meter

LM-MP4000-4A:

MP-4000 with Axial Field Probe PM4-A

Hall Sensor distance: 2.0 mm
Total length of the probe: 125 mm
Length of the probe handle: 65 mm
Diameter of the probe tube: 8.6 mm

LM-MP4000-4T:

MP-4000 with Transversal Field Probe PM4-T

Hall Sensor distance: 0.9 mm
Probe thickness: 1.8 mm
Total length of the probe: 127 mm
Length of the probe handle: 65 mm
Width of the probe tube: 5.6 mm

LM-MP4000-4TR:

MP-4000 with Transversal Flexible Reed Probe PM4-TR

Hall Sensor distance: 0.35 mm
Probe thickness: 0.7 mm
Width of the probe reed: 3.5 mm
Length of the probe reed: 63 mm
Total length of the probe: 127 mm

LM-MP4000-4TF:

MP-4000 with Transversal Fully Flexible Probe PM4-TF

Hall Sensor distance: 0.5 mm
Probe thickness: 1.2 mm
Total length of the probe: 127 mm
Length of the probe handle: 65 mm
Length of the probe reed: 62 mm
(in 90° direction when using the angle piece 56 mm)
Width of the probe reed: 4.3 mm

