

INTRODUCING

The NEW Luxxor® LXC Camera

Easily adapt your Rigid or Flex scope to HD video

*Luxxor® LXC Camera
1/2.9" HD 1.4 MP Camera
with IMX6 Image Processor*

*Attach to any Hawkeye® Borescope
Eyecup (Rigid or Flexible)*



*Luxxor® Video Coupler Lens
Clamps to borescope eyecup and
fits video camera C-Mount.*

*LXC-LED
Light Source
with automatic
exposure control*

HD Resolution

USB3 or HDMI Video

Integrated LED Light Source

**Integrated Image
Capture Software**

Made in USA!!!



Luxxor
LXC CAMERA



Your Complete Source for
Testing Equipment Since 1969!

www.BergEng.com
Berg Engineering & Sales Company, Inc.

Gradient Lens Corporation®

1-847-577-3980
Info@BergEng.com

Luxxor® LXC Camera Specification

Image Sensor	1/2.9", 1.4mp with IMX6 Image Processor
Effective Pixels	1280 x 1084
Frame Rate	30fps
Video Output	USB3.0 and HDMI
Lens Mount	C-Mount
AGC	Auto or Manual
Operating Temp	0 to 40 deg C (32 to 104 F)
Storage Temp	-30 to +60 deg C (-22 to +140 F)
Dimensions	25mm x 28mm x 110mm (without video coupler lens)
Mount	¼ - 20 Tripod Thread
LED	Integrated Bright LED light source with automatic exposure control
Software	Video Toolbox (Image and Video Capture, crosshair/grid overlay, digital zoom, and image labeling)

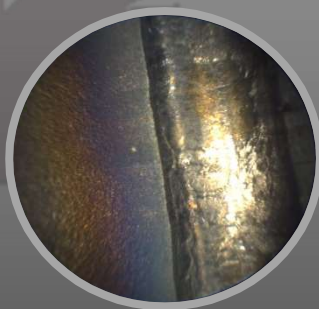
Luxxor® LXC Camera Price List

Model Number	Description
LXC-VBSM	LXC Camera, LED Light Source, Video Coupler, HDMI/USB Cable, Software, Power Supply and Rugged Carrying Case
LXC	LXC Camera, HDMI/USB Cables, Software, Power Supply
LXC-LED	LXC LED Light Source
LXC-PWR-SUPPLY	LXC Power Supply, USB to 110v
LXC-HDMICABLE	LXC HDMI Cable
LXC-USBCABLE	LXC USB Cable

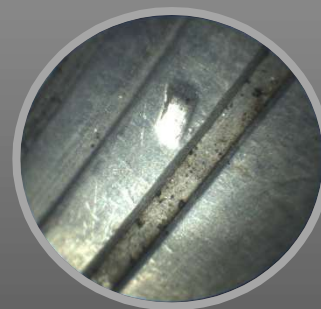
Simple Picture and Video Capture



Casting inspection using Hawkeye® Pro Slim and Luxxor® LXC Camera.



Welded pipe inspection using Hawkeye® Pro Slim with Mirror Tube and Luxxor® LXC Camera.



Valve body inspection using Hawkeye® Pro Slim and Luxxor® LXC Camera.

