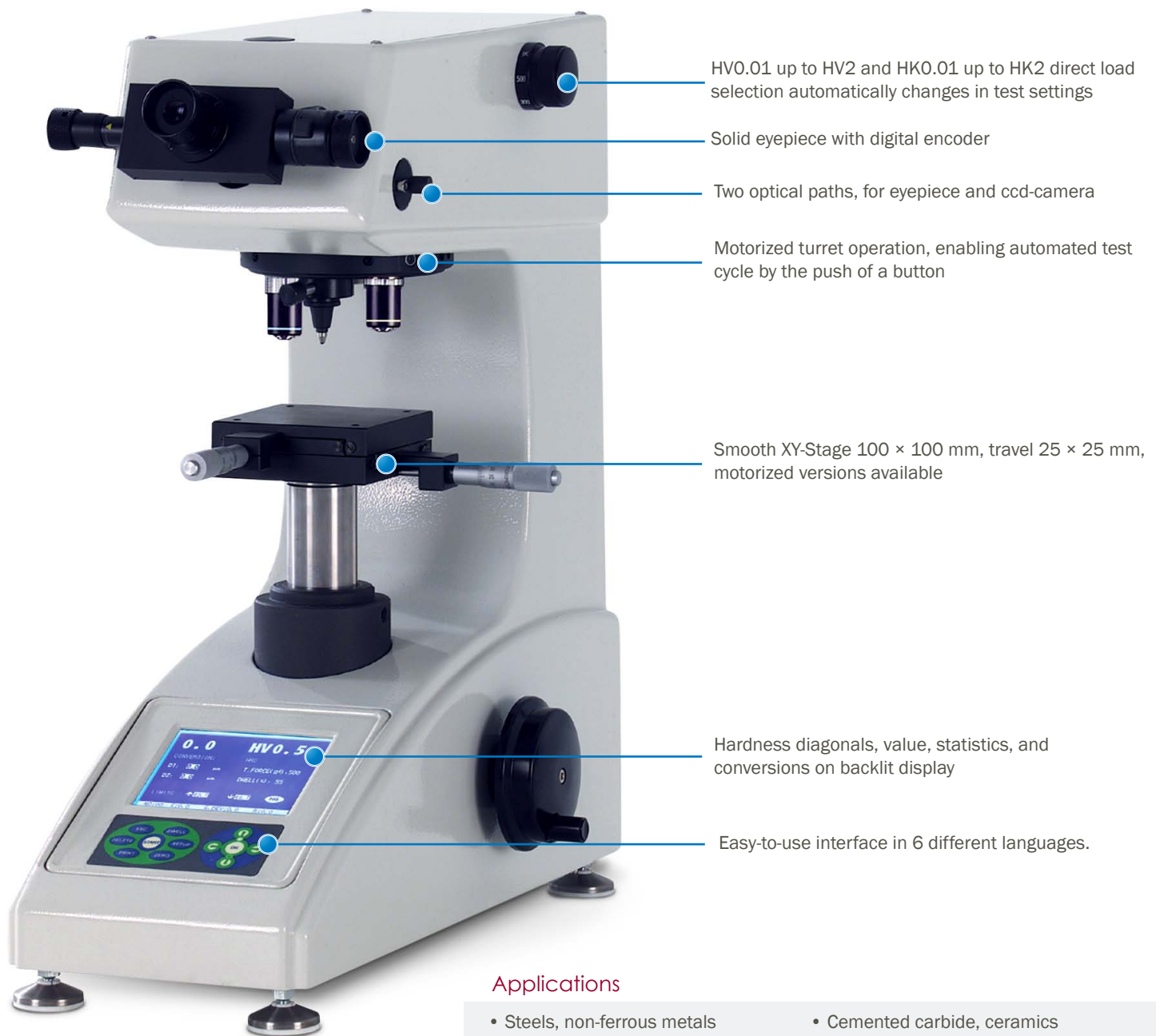


The 402 MVD Vickers and Knoop Testers are versatile, user-friendly, and provides an affordable reliable solution for accurate microhardness scale testing, both for quality assurance or metallurgical research. The 402 MVD is equipped with an automatic turret and crisp optics that provides a total magnification of 100X and 400X, as well as eight dial selectable test loads ranging from 10 gf - 2 Kg. For easy sample mounting, a 100 × 100 mm precision XY-Stage is included as standard equipment.



HV0.01 up to HV2 and HK0.01 up to HK2 direct load selection automatically changes in test settings

Solid eyepiece with digital encoder

Two optical paths, for eyepiece and ccd-camera

Motorized turret operation, enabling automated test cycle by the push of a button

Smooth XY-Stage 100 × 100 mm, travel 25 × 25 mm, motorized versions available

Hardness diagonals, value, statistics, and conversions on backlit display

Easy-to-use interface in 6 different languages.

Applications

- Steels, non-ferrous metals
- Thin plastics, metallic foils, platings, coatings, surface layers, laminated metals
- Effect of heat treatment
- Hardness depths of carburized layer and flame hardened layer
- Cemented carbide, ceramics
- Thin plates, metallic foils, plating, miniature objects
- Hardness resulting from welding or deposition



Technical Specifications

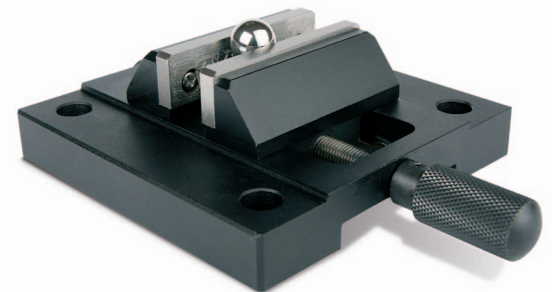
Hardness Scales	Vickers & Knoop
Test Load	10, 25, 50, 100, 200, 300, 500, 1000 (2000) gf
Test Load Selection	Dial
Accuracy	Conforms to EN-ISO 6507, ASTM E384 & E92, and JIS
Load Control	Automatic (loading/dwell/unloading)
Load Duration (Dwell Time)	5 - 99 seconds
Turret	Automatic
Eyepiece Magnification	10X
Digital Encoder Resolution	0.1µm
Objectives	10X, 40X
Total Magnification	400X (for measurement)
Measuring Range	100X (for observation), 200µm
Optical Path	2-way switchable : eyepiece/camera
Light Filter	Green and Blue
Light Source	Halogen lamp
Display	Length of diagonal, hardness converted value, test force
Hardness Value	5-digit
Diagonal Length	4-digit (D1, D2)
Data output	Built-in printer, RS232
Statistics	Number, Average, Standard deviation, Range
Conversion	Brinell, Rockwell, Superficial Rockwell, Tensile Strength
Maximum Specimen Height	85 mm (2.55 in)
Depth from the Centerline	120 mm (3.35 in)
XY-Stage Dimensions	100 × 100 mm
XY-Stage Travel Range	25 × 25 mm
Minimum Reading	0.01 mm
Operating Temperature	Range: 10° to 38°C (50° to 100°F)
Humidity	10% - 90% non-condensing
Machine Dimensions (L x W x H)	513 mm (20.2 in) × 320 mm (12.6 in) × 470 mm (18.5 in)
Weight	36 kg (79.4 lbs)
Power Supply	110 - 220V AC, 60/50Hz



Test Blocks and Indenters

Wilson® Hardness offers a wide range of reference blocks. All certified reference blocks will be issued with a certificate traceable to internationally recognized standards, such as UKAS, DKD, or ASTM.

We also offer certified indenters.



Accessories

- XY-Stage with digital micrometers
- Hardness reference blocks HV/HK with NVLAP, UKAS or DKD certificate
- Precision vices, V-blocks and special clamps
- Minuteman ELT™ PC-controlled Camera system
- Motorized XY-Stages

Please ask for a full accessories catalog



Wilson Hardness
Americas • sales@wilson-hardness.com
Europe • europe.sales@wilson-hardness.com
Asia • asia.sales@wilson-hardness.com
www.wilson-hardness.com

We are Local to You