



A supplement to our Vibrotest 60 brochure #BBF-0009.

VIBROTEST 60 *New!* version 4

New features to observe machine behavior.

- **Manual Entry** to input machine process values
- **Band-pass measurement** to evaluate bearing condition on low-speed machines.
- **Overall Vibration vs. Speed**
- **Overall Vibration vs. Time**

New features to accurately diagnose the cause of faults and damage.

- **Selective Envelope Detection (SED)** to diagnose bearing problems on low-speed machines
- **Cepstrum function**

And a completely new module with CPB spectrum functions for maximum analysis capability.

- **Constant Percentage Bandwidth (CPB)**

Traditionally, FFT spectral analysis has been used for fault detection and signal analysis, but it can be time consuming. The CPB analysis feature guarantees maximum spectral analysis in broad-band fault detection so on-going damage can be identified earlier.

- Faster measurement results through reduced number of frequency components (bands).
- Easier interpretation of the measurement data.
- Early fault detection due to high reproducibility of the measurement. Limit values can be set closer to reference values under "normal" operating conditions.



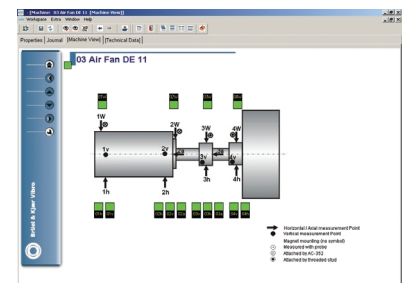
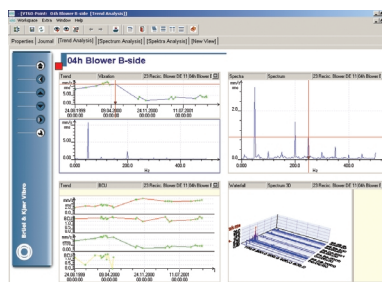
The all new Vibrotest 60 offers the most advanced vibration analysis tools available in one easy to use instrument.

xms eXtended Monitoring Software

Our new XMS software is the perfect complement to our Vibrotest 60, and makes analyzing data, machine maintenance and reporting easy! This powerful software program is completely customizable so you can easily organize your machine data with your own photos, logos and reports!

- Powerful analysis functions
- Extensive rolling-element bearing database
- Automatic report creation with customizable templates.
- Graphic navigation using your machine photos, sketches, etc...
- Internet window to access real-time info via web camera.

Can also be used independently To create a complete machine maintenance library!



VIBROTEST 60 version 4 information:

Overview of all modules:

Module 1.1:

- **Absolute bearing vibrations**
High pass: 1Hz to 10kHz*
Low pass: 10 Hz to 20 kHz*
- **Relative shaft vibrations**
High pass: 1Hz to 10kHz*
Low pass: 10 Hz to 20 kHz*
- ◆ **Bearing Condition Unit (BCU)**
- ◆ **Process values**
- ◆ **Speed measurement**
- **Manual entry**
- **Band-pass measurement**
High pass: 630 Hz to 16 kHz*
Low pass: 800 Hz to 20 kHz*

Module 1.2:

- **Overall vibration vs. speed**
1Hz to 10kHz
- **Overall vibration vs. time**
10s – 99,999s (27 hrs)

Module 2.1:

- ◆ **FFT Spectrum**

Module 2.2:

- ◆ **Bearcon Signature (BCS)**
- **Selective Envelope Detection (SED)**
Two Band Pass filters are available:
Bearing resonance frequencies:
High pass: 630 Hz to 16 kHz*
Low pass: 800 Hz to 20 kHz*
Bearing fault frequencies:
High pass: 1, 2, 5, 10 Hz
Low pass 20, 50, 100, 200, 500, 1000, 2000 Hz
- **Cepstrum function**

Module 3:

- ◆ **Tracking**

Module 5:

- ◆ **Dual channel function**

Module 7:

- ◆ **Balancing expert**

Module 8:

- **Constant Percentage Bandwidth (CPB)**
Bandwidth: Steps 70%/23%/6%
(selectable)
High pass: 1, 1/2, 2/4, 5/9/18/35 Hz
(selectable)
Low pass: 1, 1/2, 2/4, 5/9/18 kHz
(selectable)
Averaging time: 3-999 seconds
- ◆ **Ordering information and technical data as described in brochure BBF 0009-US-12**
- **New Version 4 specifications and/or modules.**
- * **Selectable in 1/3 octave steps**

PC Software Packages

Two powerful Windows® based software packages are available for the Vibrotest 60:

Vibro Report

Allows all measurement to be displayed in graphic form or as a measurement list, and printed for documentation purposes.

XMS – eXtended Monitoring Software

The professional software for “condition-oriented maintenance,” with an intelligent data-base function to manipulate comprehensive machine data.

Overview of Modules:

Basic Module B01

SQL Data base and basic functions

Interface Module I01

Communication with PCMCIA-Card, Reading Reports

Analysis Module A10

Analysis of Overall Values, Rotational Speed and Process Parameters

Analysis Module A11

Analysis of Overalls vs. Time and Overalls vs. Speed

Analysis Module A20

Analysis of Spectrum, Cepstrum, SED-/BCS Spectrum

Analysis Module A21

Analysis of CPB Spectrum

Diagnosis Module D10

FFT-Marker and Bearing Database

PC Requirements:

Windows 2000®, Windows NT® 4.0, or Windows XP®.

Pentium III or IV

Schenck Trebel Corporation
535 Acorn Street
Deer Park, NY 11729
Phone: (631) 242-4010
Fax: (631) 242-4147
eMail: sales@schcnck-usa.com
http://www.schenck-usa.com

Brüel & Kjær Vibro A/S
2850 Nærørum (Denmark)
Brüel & Kjær Vibro GmbH
64273 Darmstadt (Germany)
Internet: www.bkvibro.com